

GHOSTOP™

Introducing the first magnetic flush mount, door holder-doorstop in the USA. Ghostop's unique mechanical action uses a retracting pin to alleviate trip hazards, and makes GHOSTOP virtually invisible to the eye, maintaining a sophisticated and modern detail. GHOSTOP is powered by a concealed rare-earth magnet to ensure an exceptionally strong and smooth stop action. GHOSTOP doorstop solution kit comes with highly-durable plate with retracting pin, strike plate in stainless steel or brass with proprietary graduated recess, magnet, decorative screws, and installation guide.

THE DOOR STOPS HERE™

Mount from
bottom jamb



The Zero
Clearance
Solution

**PATENT
PENDING**

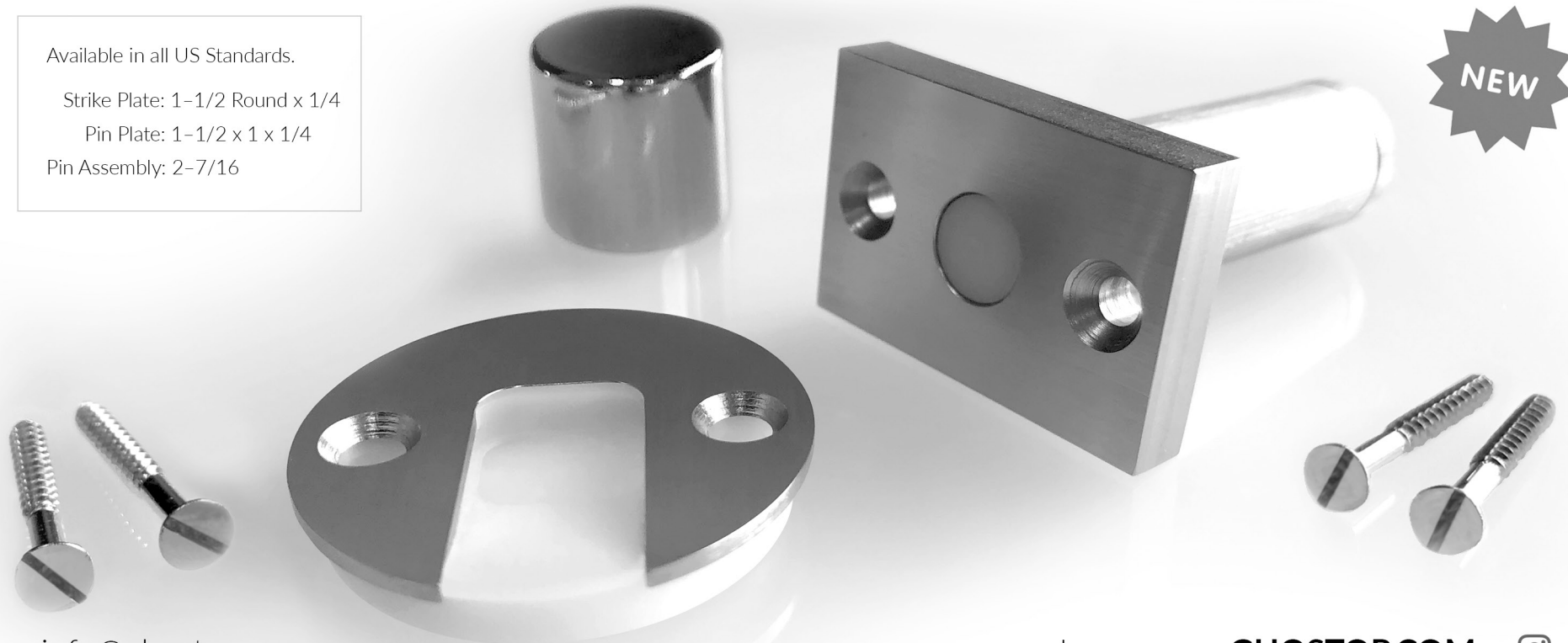
GS300

Available in all US Standards.

Strike Plate: 1-1/2 Round x 1/4

Pin Plate: 1-1/2 x 1 x 1/4

Pin Assembly: 2-7/16



info@ghostop.com

Learn more **GHOSTOP.COM**

